

HOME SIZE	BEDROOMS	BATHROOMS	CAR SPACE
272m ²	4	2	2

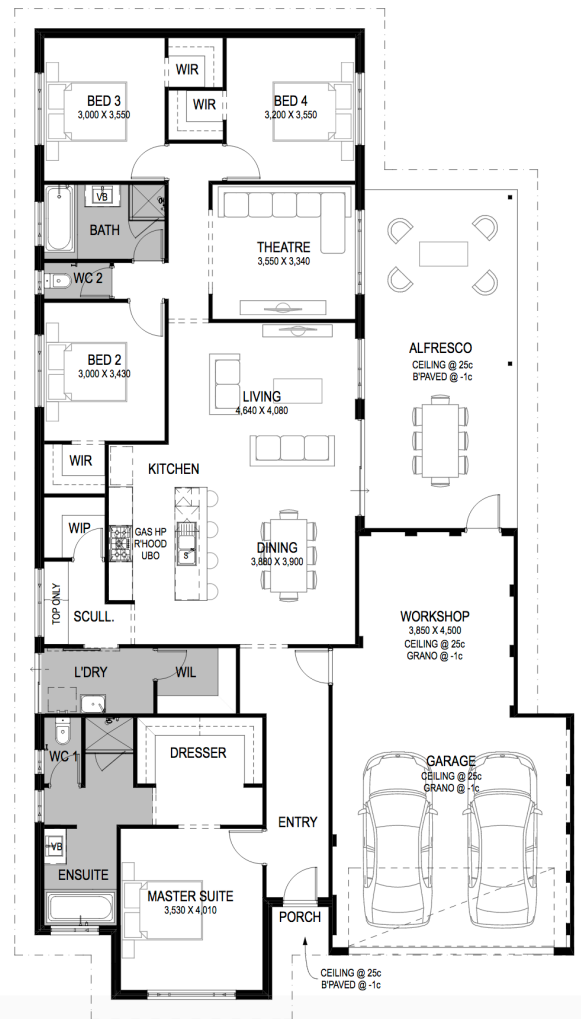


Quality house design with monster garage/workshop! From \$464,400*

Situated on the turquoise Geographe Bay and only 2km from the Dunsborough town centre, Dunsborough Lakes, provides a family-focused community. Within the Estate the beautiful parks and walkways, brilliant native surrounds, and strong sense of community, create a unique lifestyle.

Fantastic 4 bed 2 bath home built with a monster garage/workshop, this home is ready for you to move into.

- Premium 900mm luxury Italian SMEG stainless steel hot plate
- Premium 900mm luxury Italian SMEG stainless steel underbench oven
- Premium 900mm luxury Italian SMEG rangehood
- NatHERS 6-star energy rating as standard
- Ducted reverse cycle air conditioning through out
- Floor tiling to main living areas
- Carpet to bedrooms and theatre (if applicable)
- Roller Blinds to bedrooms (excluding wet areas)
- 31c ceiling to living areas
- Mirrored robes
- Led Lighting through out
- Choice of 6 elevations
- Essa stone bench tops
- Clipsal Iconic switches and GPOs throughout
- BGC Residential South West Online Client Portal
- Siteworks included



Darrin Bennett

M: 0404 487 637

E: bennettd@bgcsouthwest.com.au