



## HOUSE AND LAND PACKAGE

### THE EVOLUTION SERIES



## THE EVOLUTION

V SPEC RANGE



Total house area : 272.63m<sup>2</sup>

Total land area: 573m<sup>2</sup>

### Welcome to the Evolution!

The Evolution of home designs is finally here! Experience the modern luxury and innovation that is Ventura Homes. The Evolution Series was designed with you in mind, tailored to suit your needs and lifestyle. This stunning new design is packed full of features including:

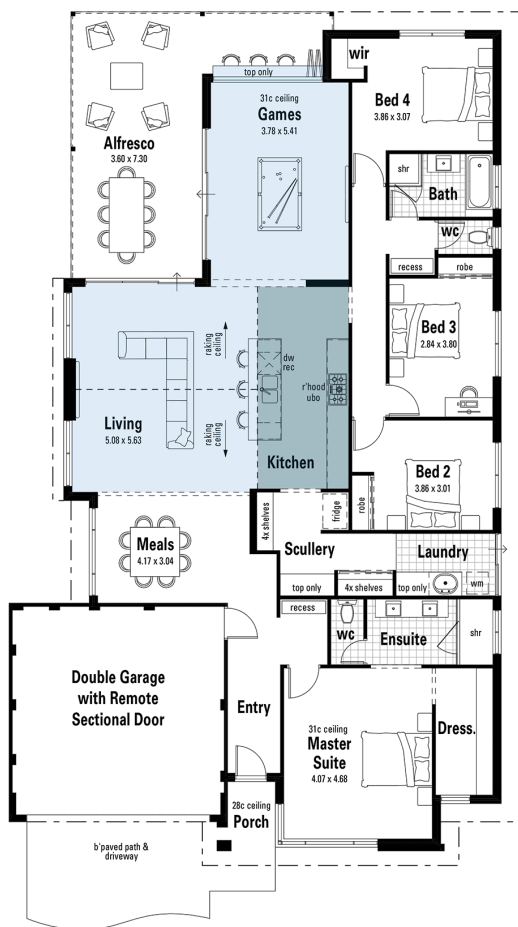
- Raked Ceilings.
- Generous games room with bar area and bi-fold windows.
- Daikin reverse cycle AC.
- 20mm Essastone benchtops in kitchen, scullery and bathrooms.

The Choice is Yours - For just \$2,500 you can choose from the following upgrades to add that extra touch of luxury to your new home.

Feature stone cladding to front elevation and living room feature wall.

3.18kw solar power package with solar hot water unit and LED lighting.

Kitchen package including fridge, integrated dishwasher, microwave and full height overhead cabinetry to kitchen and fridge recess with built in range hood.



272SQM | FITS ON A 15M BLOCK

The orientation or shape of your lot may require our design team to revise the plans. Please talk to your Ventura Homes consultant for more information.

VERY VENTURA

Lot 1366 BALLYNEAL LOOP  
DUNSBOROUGH LAKES "ISLANDS"

From:

**\$674,000**  
**SUE McCAMON**  
**0410309909**



[mccamons@venturahomes.com.au](mailto:mccamons@venturahomes.com.au)

\*Site costs may vary upon receipt of soil report and site survey. Ventura Homes does not own the land, nor do they claim to own the land advertised as part of this package.

South West Bunbury | Busselton | Margaret River Head Office 11 Stirling Street, Bunbury, WA 6230 P (08) 9792 2333 [venturahomes.com.au](http://venturahomes.com.au) | LIVING *redefined*