

# The Bayswater House and Land Package



## From \$372,200\*

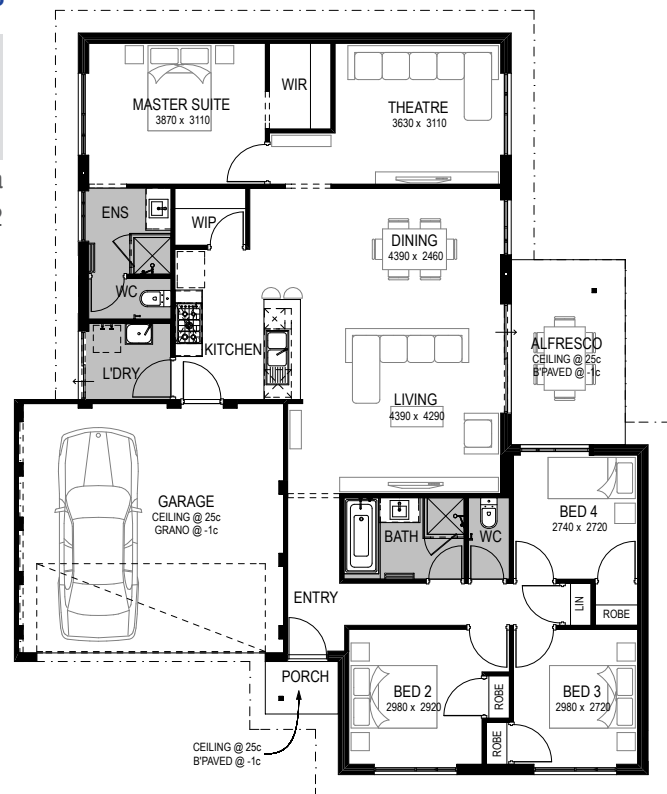
Lot 1432 Kawana Boulevard, Dunsborough Lakes

HOME SIZE	BEDROOMS	BATHROOMS	CAR SPACE
184m <sup>2</sup>	4	2	2

Located in stage 5 of the exclusive Dunsborough Lakes Estate on a 444m<sup>2</sup> corner block this package includes a fantastic 4 bedroom, 2 bathroom design. With blocks selling fast you will need to act now to secure your lot in this prestigious estate. Dunsborough Lakes is only minutes to the beach, Dunsborough town centre and the wineries and restaurants that the South West region is famous for.

The Bayswater is a popular design with a double lock up garage, and comes with the Velocity Specification which includes:

- Modern front elevation (as illustrated)
- Remote control garage door
- 900mm Smeg appliances
- Laminex/Formica benchtops
- Instantaneous gas hot water system
- Designer tapware to bathroom, ensuite, laundry and kitchen
- Quality tiling to Laundry, bathroom, toilet and ensuite
- NatHERS 6 star rating
- Lifetime Structural Warranty
- and so much more



**Bruce Secrett**

M: 0408 963 871

E: [bruces@bgcsouthwest.com.au](mailto:bruces@bgcsouthwest.com.au)

