



HOUSE AND LAND PACKAGE

From: **\$448,367**

THE SHOWSTOPPER

VOGUE ESSENTIALS



Total area (m2): 262

Act now to receive a 3.18KW solar PV system and Quantum heat pump for only \$990 (limited to first 3 packages signed). This is on top of Ventura's great standard offers

- Close to schools, Simmo's Icecream, wineries and beach
- Includes Daikin ducted reverse cycle air con, Vinyl plank floors & premium carpet throughout, 31c high ceilings/ 28c doors and windows to living!, Essa stone bench tops, \$18k site cost allowance, fencing and landscaping plus much more!

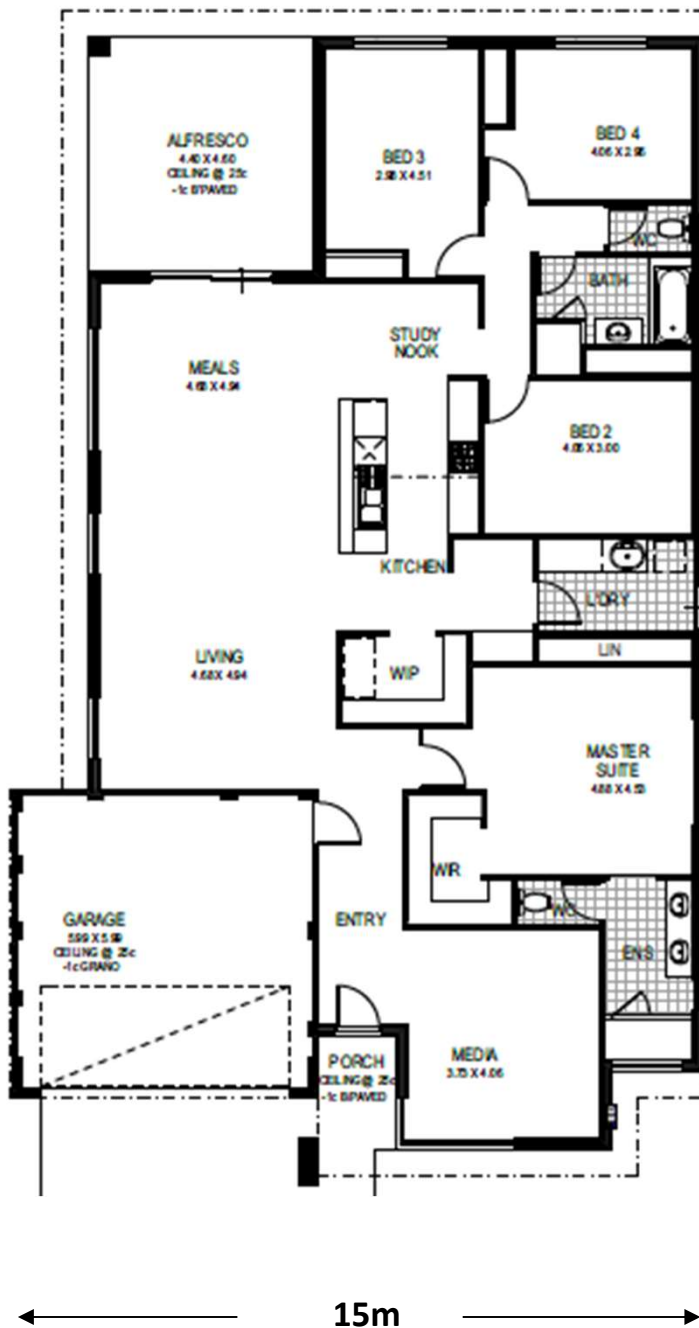
Lot Address: 1449 Swinley Approach
Dunsborough- 17.5m wide- 525m2

ventura HOMES LIVING *redefined*



Tim Sadleir
0404 125 406

/New Homes Consultant Tim Sadleir



*Site costs may vary upon receipt of soil report and site survey. Ventura Homes does not own the land, nor do they claim to own the land advertised as part of this package.