

# THE GUILDFORD HOUSE AND LAND PACKAGE FROM \$378,400\*



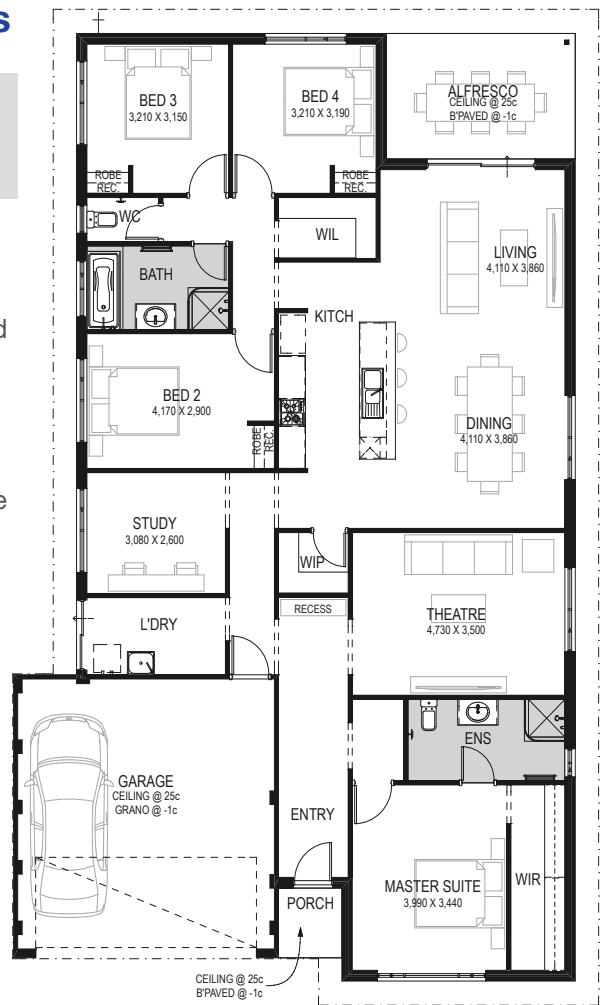
## Lot 1459 Kawana Boulevard, Dunsborough Lakes

HOME SIZE	BEDROOMS	BATHROOMS	CAR SPACE
231m <sup>2</sup>	4	2	2

This package located in Dunsborough Lakes provides easy access to the beach, town centre and is close to the proposed primary school and an 18 hole public golf course. This family sized block is 450m<sup>2</sup> and includes fencing and front landscaping.

The Guildford home is one of our most popular designs which now comes with a range of brand new elevations to choose from. The home is a great size for a family or investor with 4 bedrooms, study, theatre with great sized outdoor area for entertaining.

- An \$18,000 provisional sum for siteworks
- NatHERS 6 Star energy rating as standard
- Laminex/Fomica benchtops throughout
- Quality tiling to bathroom, ensuite, WC and laundry
- Roof selection from the Harmony Habitat Range Roof Tiles
- Paving to driveway up to six metres, path, verandah/porch and alfresco
- Clipsal Iconic switches and GPOs throughout
- Telecommunications package including provision for NBN
- Lifetime structural warranty
- Access to Online Client Portal



**Kristy Robertson**

M: 0491 374 140 E: [kristyro@bgcsouthwest.com.au](mailto:kristyro@bgcsouthwest.com.au)

