



# The Canning House and Land Package From \$391,600\*

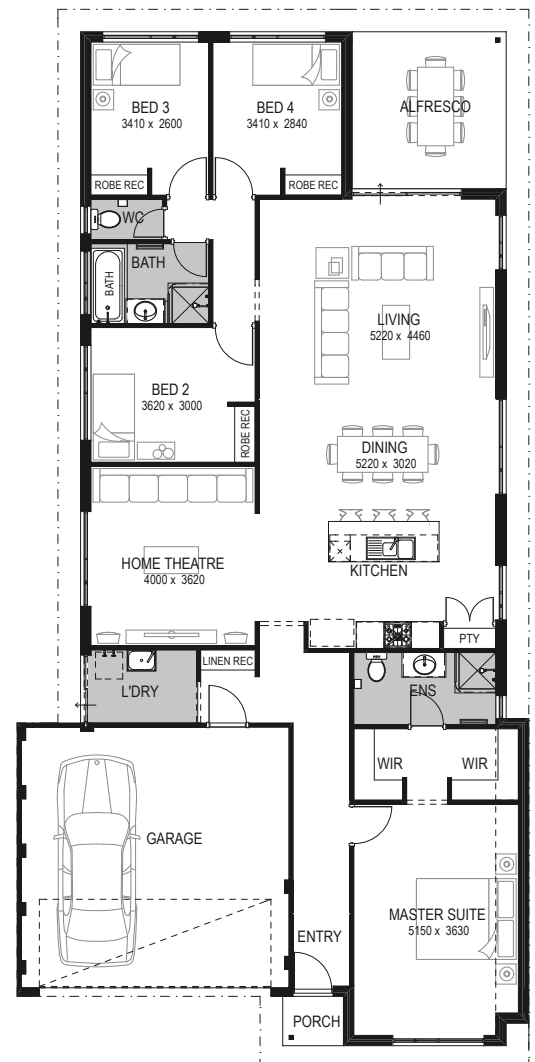
Lot 1476 Swinley Approach, Dunsborough Lakes

HOME SIZE	BEDROOMS	BATHROOMS	CAR SPACE
222m <sup>2</sup>	4	2	2

Dunsborough Lakes is nestled amongst gorgeous tree lined streets, parks and an 18 hole Championship Golf course. You're a stones throw away from the thriving restaurant and cafe scene, beautiful pristine beaches, the area's most popular schools plus Dunsborough Lakes very own primary school due to be built.

Affordability is key in this perfect package right across the road from Simmo's Icecream! Located on a 450sqm block and built with BGC, WA's largest residential builder, this Commodore Home "The Canning" includes:

- An \$18,000 provisional sum for site works
- Fujitsu multi zoned reverse cycle air conditioner
- Selection of 6 unbeatable designer elevations
- High ceilings to living areas
- Luxury stone bench tops to kitchen
- 900mm kitchen appliances
- Designer floor coverings throughout
- Blinds throughout.



**Chanel Burriel**

M: 0411 039 322 E: [chanel@bgcsouthwest.com.au](mailto:chanel@bgcsouthwest.com.au)

