



## The Viewbank House and Land Package. \$402,840

Lot 1325 Princeville Ave, Dunsborough Lakes

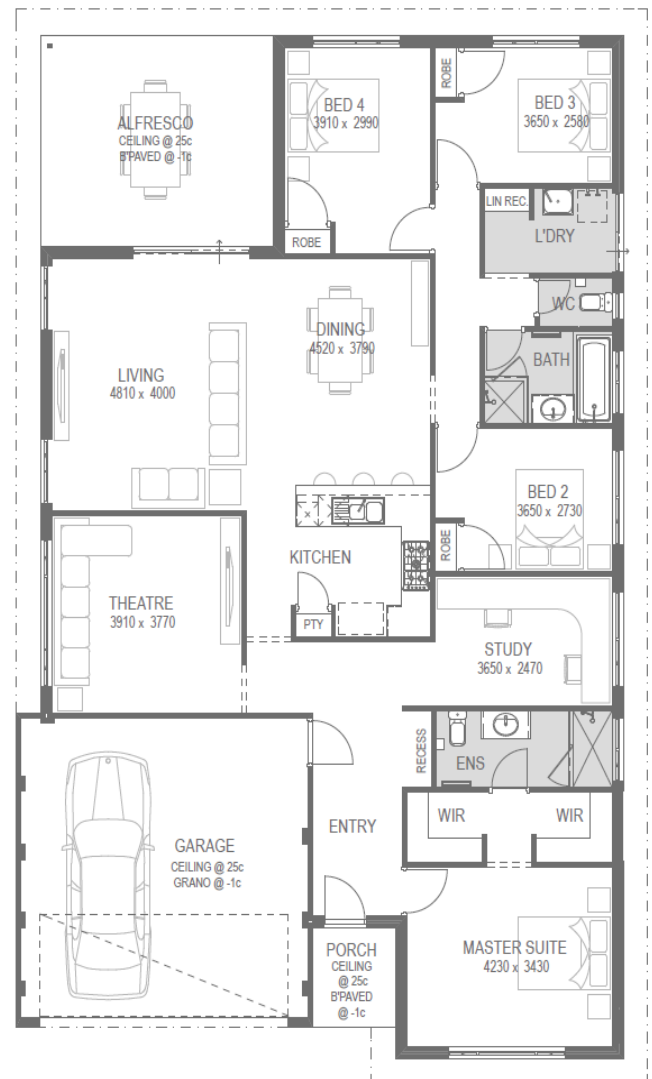
HOME SIZE	BEDROOMS	BATHROOMS	CAR SPACE
232m <sup>2</sup>	4	2	2

Land 460m<sup>2</sup> includes boundary fencing and front landscaping  
The Viewbank home design is 232m<sup>2</sup> and includes:

- 4 Bedrooms
- 2 Bathrooms
- Theatre
- Study
- Alfresco
- Double Garage
- High ceilings to the Living and alfresco
- Ducted reverse cycle air conditioning
- Essa stone to Kitchen, Bathrooms and Ensuite
- 600 x 600mm floor tiling to living areas
- Carpet to the remainder
- Roller blinds throughout
- LED package
- 900mm appliances
- Flickmixers throughout
- Rain shower heads to Ensuite and Bathroom
- Feature internal doors
- Choices of 6 elevations

Finance available

\$20,000 site provision in package price



Kristy Robertson M: 0491 374 140 E: [kristyro@bgcsouthwest.com.au](mailto:kristyro@bgcsouthwest.com.au)