



The Tacoma House and Land Package. \$422,050

Lot 1326 Princeville Ave, Dunsborough Lakes

HOME SIZE	BEDROOMS	BATHROOMS	CAR SPACE
273m ²	4	2	2

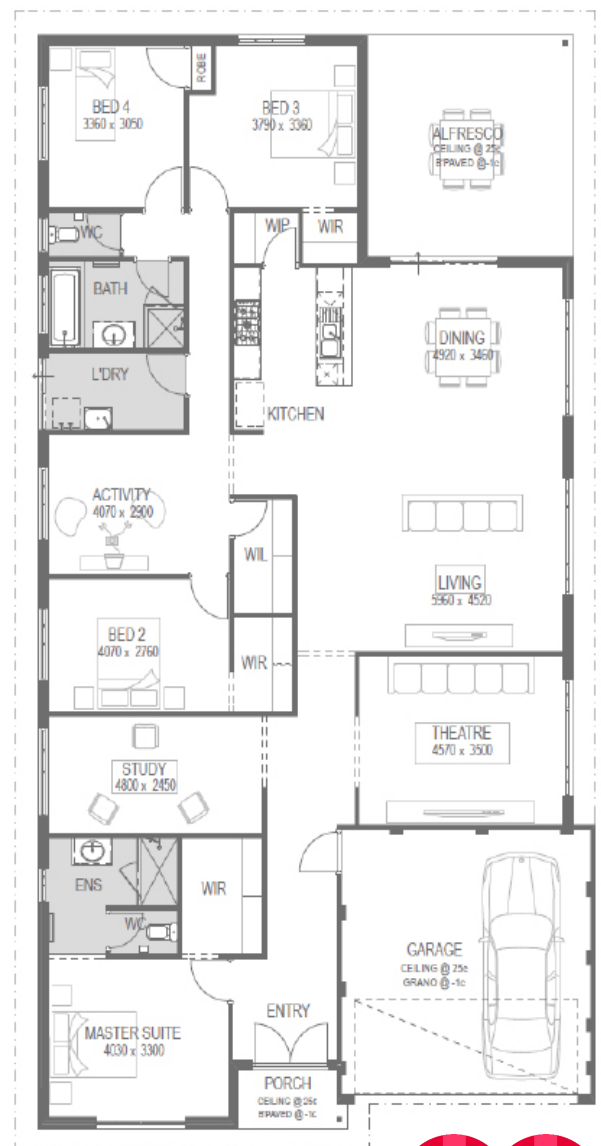
Land 460m² includes boundary fencing and front landscaping

The Tacoma home design is 273m² and includes:

- 4 Bedrooms
- 2 Bathrooms
- Theatre
- Study
- Activity
- Alfresco
- Double Garage
- Walk in Linen
- Walk in Pantry
- All round great layout! Plus....
- High ceilings to the Living and alfresco
- Ducted reverse cycle air conditioning
- Essa stone to Kitchen, Bathrooms and Ensuite
- 600 x 600mm floor tiling to living areas
- Carpet to the remainder
- Roller blinds throughout
- LED package
- 900mm appliances
- Flickmixers throughout
- Rain shower heads to Ensuite and Bathroom
- Feature internal doors
- Choices of 6 elevations

Finance available

\$20,000 site provision in package price



Kristy Robertson M: 0491 374 140 E: kristyro@bgcsouthwest.com.au